

THE COLUMBIA COLLEGE CHICAGO THEATRE DEPARTMENT
PRESENTS

WW™D

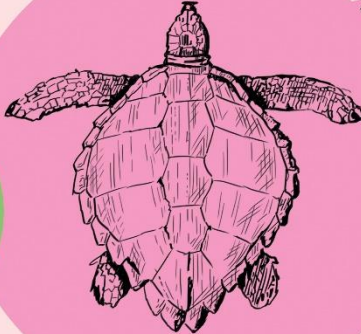
by **Ana Nordwig**

directed by **Matthew Masino**

selected for the Playwriting Senior Showcase

April
23rd at 8:00pm
24th at 7:00pm
25th at 6:00pm

The Classic Studio
72 E 11th Street



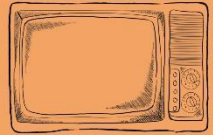
**FREE
ADMISSION**



Runs approx. 75 minutes
with no intermission

Reserve tickets at
www.colum.edu/directingprojects

Columbia
COLLEGE CHICAGO



WW™D

BY ANA NORDWIG

WITH SPANISH TRANSLATIONS BY BENJAMIN ORTIZ

CAST

Slater	Pierce Howard
Lumen	Micki Downey
Ishque	Martin Andrade
Mac	Sophia Rosado
Bethany	Grace Trivax
One-R	Logan Van Sutherland
Wimblefin	Andrew Raymond Casey
Box Set	David Daugherty

PRODUCTION TEAM

Director	Matthew Masino
Asst. Director	Teresa Elj
Production Stage Manager	Sonja Pardee
Asst. Stage Manager	Hannah Loessberg
Scenic Designer	Mary Moyers
Costume Designer	Molly Hill
Hair & Makeup Designer	Andrew Raymond Casey
Lighting Designer	Hannah Wien
Sound Designer	Matthew Masino
GeoParty! Sound Technician	Andrew Meyers
Prop Coordinators	Matthew Masino, Sonja Pardee
Choreographer	Ariel Triunfo
Violence Choreographer	Teresa Elj
Asst. Violence Choreographer	Lucia Frisancho
Was In the Room	Allen Lucas
Spanish Language Coach	Benjamin Ortiz
German Language Advisor	Daphne Bichler
Mandarin Language Advisor	Keegan Smit
American Sign Language Coach	Ana Nordwig
Light Board Operator	Taylor Weber
Sound Board Operator	Elaina Nischan
Poster Design	Stef Preda
Production Photography	Madison Kesselring

PLAYWRIGHT'S NOTE

However the thought of loneliness may frighten us, we must never lessen ourselves.

COLUMBIA COLLEGE CHICAGO STAFF

Interim Chair	Peter Carpenter
Playwriting Program Head	Paul Amades
Production Manager	Pete Dully
Stage Management Advisor	Nykol Dedreu
Scenic Design Advisor	Jackie Penrod
Lighting Design Advisor	Heather Gilbert
Master Electrician	Marc Chevalier
Costume Design Advisor	Francis Maggio
Costume Shop Foreman	Tom Kieffer
Costume Shop Manager	Patti Roeder
Director of Technology	Josef Szaday
Violence Coordinator	David Woolley
Resource Center Staff	Leo Batutis, Matthew Masino, Wil Hinkle
Production Work Aides	Sophia Goddard, Aryn Henderson, Madison Kesselring, Annika Kuz, Peter Murphy, Sonja Pardee, Ella Silverman
Electrics Crew	Lena Aubrey, Liz Gomez, Stephen Melia, Kate Kiefuss, Connor Sale
A/V Work Aides	Jamie Davis, Alexis Kwaben, Jared Rhinehart
Costume Shop Work Aides.....	Aubrey Brown, Savana Nix, Isaac Pineda, Jasmine Slade
Makeup Work Aide	Xinxin Wang
Theatre Office Work Aides	Benjamin Dib, Ben Peachey

SPECIAL THANKS

Paul Amades, Leo Batutis, Ellie Buntensch, Nykol Dedreu, Pete Dully, Lucia Frisncho, Aryn Henderson, Wil R Hinkle, Michael Klatt, Maralynn Middleton Markano, Amy & Gary Masino, Andrew Meyers, Peter Murphy, Paula Kramer Nordwig, Benjamin Ortiz, Ben Peachey, Joe Szaday, Rebecca Van De Laarschot, and Viewers Like You. Thank you!

The cast and crew of WW™D would like to dedicate the performance to Alex Trebek and the pole in Room 301.

DIRECTOR'S NOTE

“Pobody’s nerfect.”

– Eleanor Shellstrop, *The Good Place*

WW™D runs approximately 75-minutes with no intermission.

The use of any recording device, either audio or video, and the taking of photographs, either with or without flash, is strictly prohibited. Please turn off all electronic devices such as cellular phones, beepers, and watches.